



**DON'T LET NOBODY TURN YOU 'ROUND!**

**Thursday, October 8, 2020 | 7 p.m.**

Bishop Gregory G.M. Ingram, Presiding Prelate, First Episcopal District  
Rev. Dr. Jessica Kendall Ingram, Episcopal Supervisor, First Episcopal District  
Rev. Kevin T. Taylor, Pastor, Allen Chapel AMEC – Hartford

# The 2020 Election is Consequential



**Vote like your life depends on it – it does!**

# Aims & Objectives

**BEFORE**  
Election  
Day



**ON** Election Day

**AFTER**  
Election Day





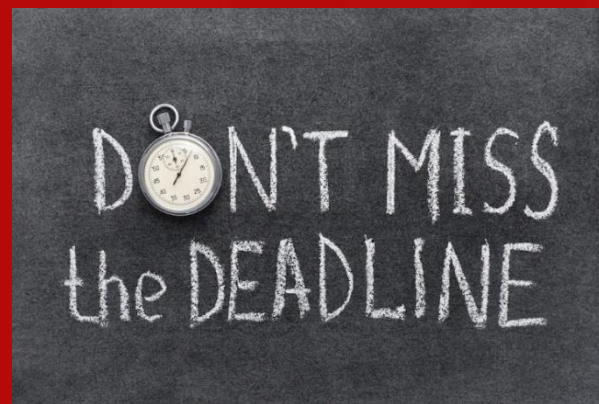
# BEFORE Election Day

## Plan Ahead

- Visit [nbcnews.com/planyourvote](https://www.nbcnews.com/planyourvote) for the links to the Secretary of State website of your state
- Double-check your registration status, polling location, absentee/mail-in ballot restrictions and understand the social distancing guidelines

Voter registration deadlines are fast approaching:

- **Connecticut** – Tuesday, October 27 (online and mail)
- **Delaware** – Saturday, October 10
- **Massachusetts** – Saturday, October 24
- **New Jersey** – Tuesday, October 13
- **New York** – Friday, October 9
- **Pennsylvania** – Monday, October 19
- **Rhode Island** – Sunday, October 4
- **Bermuda** – Visit <https://www.elections.gov.bm/> for registration info and results of your recent election



# BEFORE Election Day Continued

## *Plan to Vote Early (in person, where possible)*

Visit [nbcnews.com/planyourvote](https://www.nbcnews.com/planyourvote) to see if your state allows you to vote early in-person and familiarize yourself with the parameters:

- **Connecticut** – No, early voting is not permitted
- **Delaware** – Yes, Monday, October 5 – Monday, November 2
- **Massachusetts** – Yes, Saturday, October 17 – Friday, October 30
- **New Jersey** – Yes, Monday, September 21 – Monday, November 2
- **New York** – Yes, Saturday, October 24 – Sunday, November 1
- **Pennsylvania** – Yes, Monday, September 14 – Tuesday, October 27
- **Rhode Island** – Yes, Wednesday, October 14 – Monday, November 2
- **Bermuda** – Visit <https://www.elections.gov.bm/> for more information

**VOTE EARLY**

YOUR TIME | YOUR VOICE | YOUR VOTE

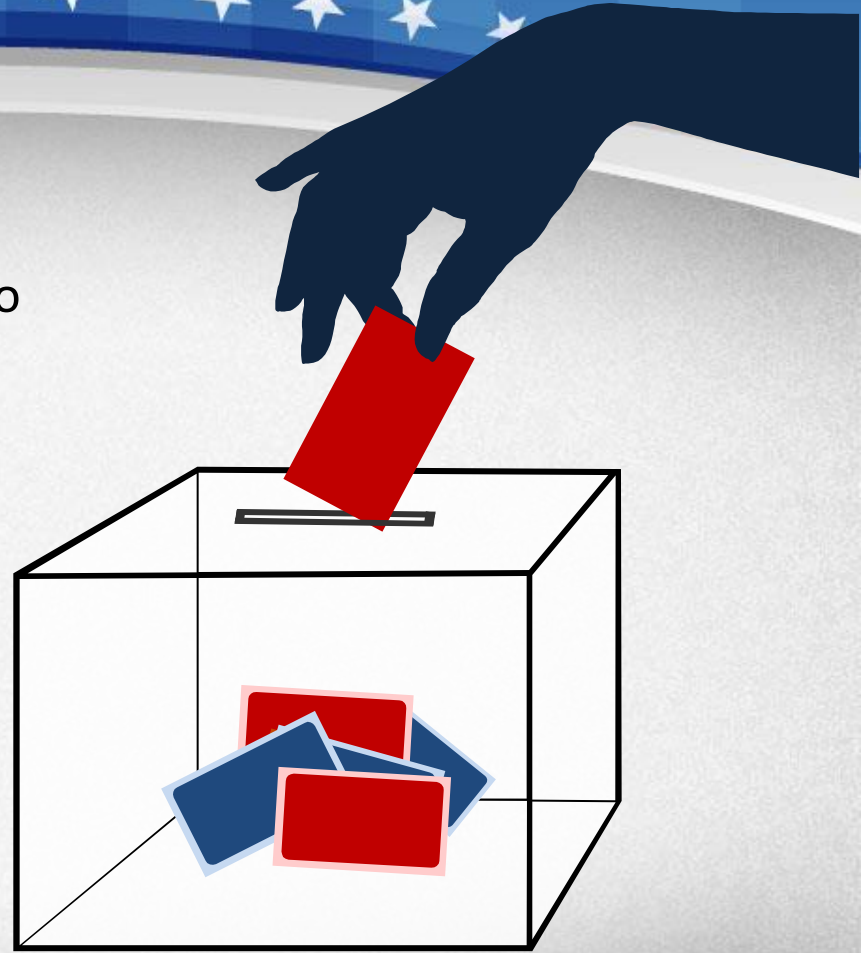
**Plan to Vote in Person (if safe to do so)**

Visit [nbcnews.com/planyourvote](https://www.nbcnews.com/planyourvote) for the link to the Secretary of State website of your state

- Research your polling location
- Learn where to return your absentee/vote-by-mail application

**Join the “Operation Vote Now” Campaign**

- Dr. Charmaine Cohen ([charmook@aol.com](mailto:charmook@aol.com), 585-747-8809)
- Rev. Dr. Craig J.J. Wright (516-902-0772)

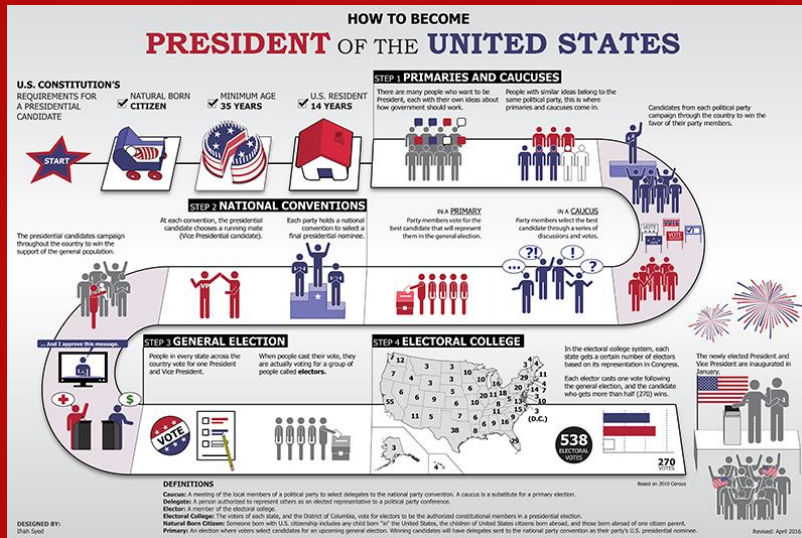




# BEFORE Election Day Continued

## Research the Electoral College

- Checkout this kid-friendly infographic
- Watch this YouTube Video, “How to Become President of the United States”
- Understand how the 2016 election result would have been different without the Electoral College
- Watch the October 4 episode of *Black-ish* (i.e., *On Demand, Hulu, etc.*) with your loved ones



# ON Election Day

## Expect Long Lines

Ask yourself:

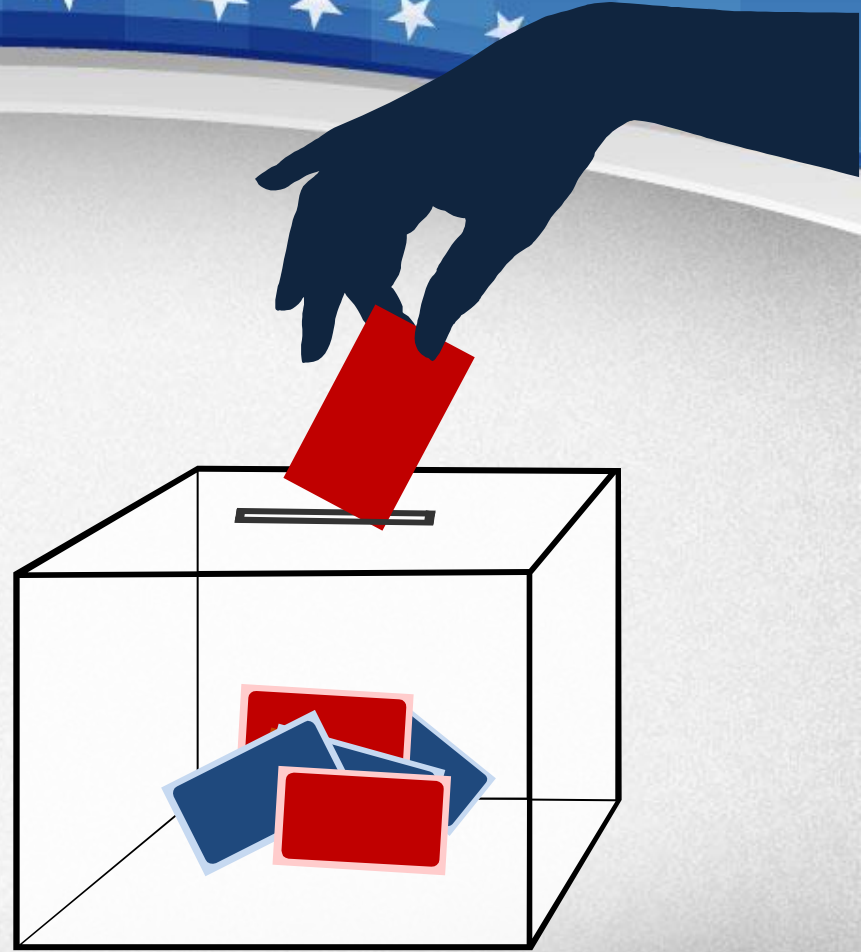
- If I am at my polling location **much longer than anticipated**, what do I need to bring with me (e.g., umbrella, medication, snacks/meals, water, lawn chair, etc.)?
- Who in my life would be impacted if I'm **running late** (e.g., employer, childcare, loved ones, etc.)?
- How will I **maintain safe distance** between me and other voters?





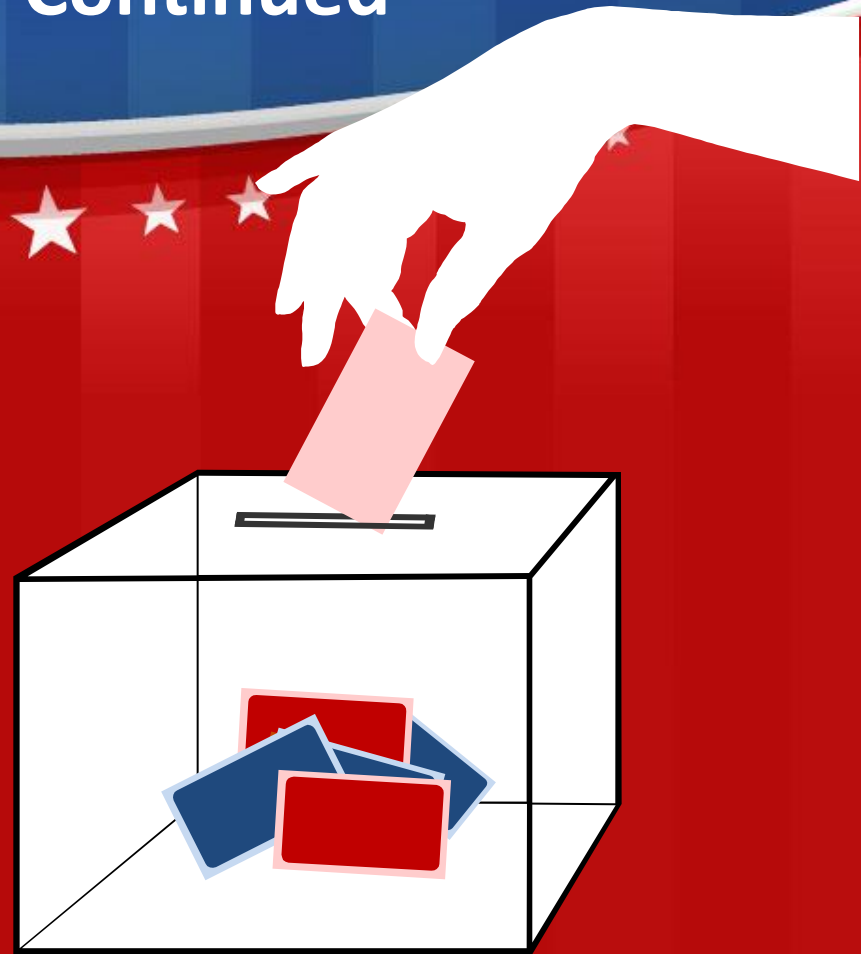
## **Not Listed? Ask for a "Provisional Ballot"**

- Also referred to as "challenge ballots" or "affidavit ballots" in some states, they are **required** by the federal Help America Vote Act of 2002 (HAVA)
- [Provisional ballots ensure that voters are not excluded from the voting process due to an administrative error](#)



# ON Election Day Continued

- Provisional ballots provide a fail-safe mechanism for voters who arrive at the polls on Election Day and whose eligibility to vote is uncertain
- When there is uncertainty about a voter's eligibility—the potential voter's name is not on the voter rolls, a required identification document isn't available or other issues—the election official is required to offer the voter a provisional ballot instead of a regular ballot



**PROVISIONAL  
BALLOTS**



# AFTER Election Day

## Don't Expect 2020 to be 2008

- We must *normalize* with our loved ones the possibility that **we may not know** the outcome of the election by **11P EST on Tuesday, November 3**
- Unless there is an overwhelming result, it is possible that the election **may not be called** for several days as absentee, provisional and mail-in-ballots are counted
  - Our position has to be: “**Every vote must be counted**” – including all ballots *postmarked* by election day and *received* by the deadline
- If we plan our vote, vote early and mail-in/drop-off our absentee ballots before election day, we increase the possibility of an election day landslide





# AFTER Election Day Continued

**PLAN  
YOUR  
VOTE.**

Visit us online  
to learn more.

[NBCNews.com/PlanYourVote](https://www.nbcnews.com/PlanYourVote)



## Check the Status of Your Ballot

- **Connecticut** – Yes, visit [nbcnews.com/planyourvote](https://www.nbcnews.com/planyourvote) for the link
- **Delaware** – Yes, visit [nbcnews.com/planyourvote](https://www.nbcnews.com/planyourvote) for the link
- **Massachusetts** – Yes, visit [nbcnews.com/planyourvote](https://www.nbcnews.com/planyourvote) for the link
- **New Jersey** – Yes, visit [nbcnews.com/planyourvote](https://www.nbcnews.com/planyourvote) for the link
- **New York** – Yes, visit [nbcnews.com/planyourvote](https://www.nbcnews.com/planyourvote) for the link
- **Pennsylvania** – Yes, visit [nbcnews.com/planyourvote](https://www.nbcnews.com/planyourvote) for the link
- **Rhode Island** – Yes, visit [nbcnews.com/planyourvote](https://www.nbcnews.com/planyourvote) for the link
- **Bermuda** – Visit <https://www.elections.gov.bm/> for more info

### **Pray for the Election Outcome**

- Peaceful transition of power
- Supreme Court
- U.S. House of Representatives
- U.S. Senate
- State Legislatures in battleground states (e.g., Pennsylvania, Nevada)



Remember: [Section 1 of the 20<sup>th</sup> Amendment to the U.S. Constitution](#) says, “The terms of the President and the Vice President shall end at noon on the 20th day of January”

# AFTER Election Day Continued

## Hold Elected Officials Accountable

- At Allen Chapel, we recognize the third Tuesday of each month as **“Social Action Tuesday”**
- For example, our July 2020 focus was Police Reform in Connecticut, in partnership with our sister churches
  - Wednesday, July 15, the nine A.M.E. pastors in CT stood with Presiding Elder Jocelyn K. Hart Lovelace on the steps of the State Capital and called for the passage of the legislation
  - Friday, July 17, several of us testified (or submitted written testimony) to the Joint Committee on Judiciary of the CT Legislature
  - Between Sunday-Tuesday, July 19-21, A.M.E.s throughout CT called, emailed and texted their legislators to call for the passage of the bill
  - Friday, July 31, CT Governor Ned Lamont signed House Bill 6004 into law







### **Invest in Candidates Who Share Your Values**

In the first 24 hours of Kamala Harris being named Joe Biden's running mate, 11,000+ donations of \$19.08 poured into the Democratic National Convention – more than \$219,000!

- Why **\$19.08**? For **1908**, the year that Kamala Harris' sorority, Alpha Kappa Alpha Sorority, Inc., was founded

# AFTER Election Day Continued

Whether you are member of the “Divine 9” or not, as A.M.E.s, imagine the impact if every person gave:

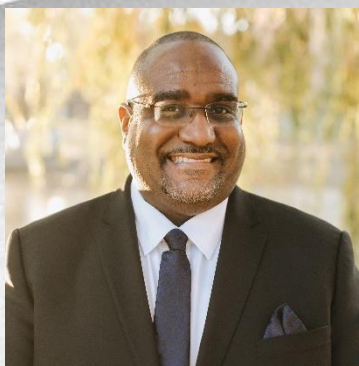
- **\$17.87** – for **1787**, the year Richard Allen led the Black parishioners out of St. George’s in Philadelphia
- **\$19.55** – for **1955**, when Rosa Parks, a member of St. Paul AMEC-Montgomery, sparked the Civil Rights Movement
- **\$19.65** – for **1965**, when John Lewis and others organized at Brown Chapel AMEC-Selma before “Bloody Sunday”
- **\$20.08** – for **2008**, when the Bishops of our Zion prayed for Barack Obama, weeks before his election as the 44<sup>th</sup> President
- **\$20.16** – for **2016**, when the First District hosted the 50<sup>th</sup> Quadrennial Session of the General Conference of the AMEC
- **\$20.21** – *prophetically* for **2021**, when we will inaugurate a new President and the first African American female as VP











## Rev. Kevin T. Taylor

Pastor, Allen Chapel AMEC – Hartford

(323) 509-8706 | [revkttaylor@hotmail.com](mailto:revkttaylor@hotmail.com)

[allenchapelhartford.org](http://allenchapelhartford.org) | [Join us for worship](#) Sundays at 11A

## Let's Keep the Conversation Going

[Register](#) for the Boston-Hartford District 2020 Virtual District Conference on Saturday, October 17 from 9A-2P

Rev. Jocelyn K. Hart Lovelace, Presiding Elder

Allen Chapel AMEC – Hartford, Virtual Host Church

NEW ENGLAND ANNUAL CONFERENCE  
BOSTON-HARTFORD DISTRICT CONFERENCE  
2020 VIRTUAL  
RE-IMAGINING MINISTRY  
*Lessons from our Past, Hope for our Future*  
PSALM 135:4  
SATURDAY, OCTOBER 17, 2020 | 9AM TO 2PM VIA ZOOM  
featuring  
A Thought-Provoking Social Justice Panel

Facilitator  
The Rev. Rahsaan D. Hall  
Director, Social Justice Program, A.C.U. - Massachusetts  
Assoc. Minister, St. Paul's Church, Cambridge, MA

The Rev. Leslie Watson Wilson  
Director, African American Religious Affairs  
People for the Alternative Way  
Assoc. Minister, St. James AME Church, Quincy, MA

A Spirit-Filled Hour of Power  
GUEST PREACHER  
The Rev. Dwayne K. Green Sr.  
Pastor, Bethel AME Church - Bloomfield, CT

Virtually Hosted by:  
Allen Chapel AME Church - Hartford CT  
and more!

Register at  
<https://us02web.zoom.us/join/register?jzwtduqtaT4rGtKLn0ySsgtmz915qkkN7DM>  
to obtain Zoom link and/or dial-in info

BISHOP GREGORY G.M. INGRAM, PRESIDING PRELATE  
THE REVEREND DR. JESSICA KENDALL INGRAM, EPISCOPAL SUPERVISOR  
THE REVEREND JOCELYN K. HART LOVELACE, PRESIDING ELDER  
BROTHER EDDIE J. LOVELACE, DISTRICT CONSULTANT  
THE REVEREND KEVIN T. TAYLOR, HOST PASTOR

Visit [www.bhdamec.org](http://www.bhdamec.org) and [NBCNews.com/PlanYourVote](http://NBCNews.com/PlanYourVote)